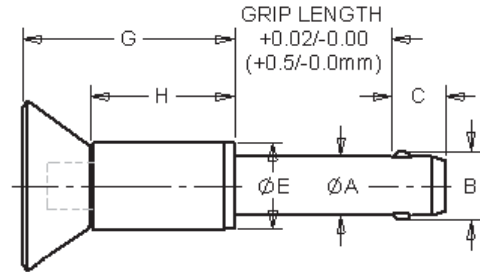
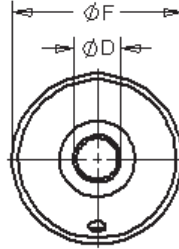




## Recessed Button Handle Kwik-Lok® Pin



- The Recessed Button Handle Kwik-Lok® Pin design helps prevent accidental actuation of the pin.
- Handle is 300 Series stainless steel and the button is 17-4 PH stainless steel.
- Body is made from high Strength Stainless Steel, 17-4 PH heat treated.
- Includes hole for easy attachment of optional lanyard or ring.



### Recessed Button Handle Specifications – Inch

DIA	A MIN	A MAX	B +/--.005	C +0.00 / -0.04	D MIN	D MAX	E MIN	E MAX	F +/--.020	G +/--.020	H +/--.020
3/16	0.1870	0.1885	0.220	0.260	0.250	0.310	0.310	0.530	0.800	0.990	0.710
1/4	0.2470	0.2485	0.289	0.290	0.250	0.310	0.310	0.530	0.800	0.990	0.710
5/16	0.3095	0.3110	0.375	0.330	0.250	0.310	0.410	0.590	0.800	1.050	0.780
3/8	0.3720	0.3735	0.440	0.365	0.300	0.390	0.450	0.650	1.090	1.375	0.930
7/16	0.4345	0.4360	0.509	0.380	0.300	0.390	0.450	0.650	1.090	1.375	0.930
1/2	0.4970	0.4985	0.594	0.460	0.435	0.565	0.600	0.800	1.040	1.320	0.930

### Recessed Button Handle Specifications – Metric

DIA	A MIN	A MAX	B +/--.13	C +0.00 / -1.00	D MIN	D MAX	E MIN	E MAX	F +/--.020	G +/--.020	H +/--.020
5MM	4.92	4.96	5.54	6.0	6.4	7.9	7.9	13.5	20.3	25.1	18.0
6MM	5.92	5.96	6.99	7.0	6.4	7.9	7.9	13.5	20.3	25.1	18.0
8MM	7.92	7.96	9.42	8.0	6.4	7.9	7.9	13.5	20.3	26.7	19.8
10MM	9.92	9.96	11.86	9.0	7.6	9.9	11.4	16.5	27.7	34.9	23.6
12MM	11.92	11.96	14.45	10.0	7.6	9.9	11.4	16.5	27.7	34.9	23.6

Pin Dia	Grip Length (In)												
	0.5	0.75	1	1.25	1.5	1.75	2	2.5	3*	4*	5*	6	
PART NUMBERS	3/16	803000	803001	803002	803003	803004	803005	803006	803008	803009	803011	803013	803015
	1/4	803016	803017	803018	803019	803020	803021	803022	803024	803025	803027	803029	803031
	5/16	803032	803033	803034	803035	803036	803037	803038	803040	803041	803043	803045	803047
	3/8	803048	803049	803050	803051	803052	803053	803054	803056	803057	803059	803061	803063
	7/16	803064	803065	803066	803067	803068	803069	803070	803072	803073	803075	803077	803079
	1/2	803080	803081	803082	803083	803084	803085	803086	803088	803089	803091	803093	803095

Contact customer service for other sizes.

Pin Dia	Grip Length (Metric)												
	10	15	20	25	30	40	50	60	70	80	90	100	
PART NUMBERS	5	853000	853001	853002	853003	853004	853005	853006	853007	853008	853009	853010	853011
	6	853012	853013	853014	853015	853016	853017	853018	853019	853020	853021	853022	853023
	8	853024	853025	853026	853027	853028	853029	853030	853031	853032	853033	853034	853035
	10	853036	853037	853038	853039	853040	853041	853042	853043	853044	853045	853046	853047
	12	853048	853049	853050	853051	853052	853053	853054	853055	853056	853057	853058	853059

Contact customer service for other sizes.

May be ordered with 4 locking balls for additional locking element tensile strength.  
Special Materials, grip length and longer "C" dimensions upon request.